



What kind of role model are you?

Throughout history, people like Fred Rogers and Jane Goodall have mastered the real-world skills they needed to stand out as paragons in their fields. Today we look to these figures as ideal examples of the skills that every student will have to demonstrate to flourish in the job market. Which skills are you modeling for your students?

Take a brief quiz to find out where you excel and learn which famous exemplar of this skill you most resemble!

Let's get started!

Your department just adopted a new software program. Over lunch, a colleague shares that she's not a fan of the change and struggles with the new tool. What do you do?



A) Ask her what about the tool is frustrating her and what help she's gotten so that you can suggest a way she might better learn the software.

B) Ask her if her frustration is with the software or something else entirely.

C) You're pretty proficient with the new system, so you offer to sit down with her and help.

D) She just needs to vent. You sympathize with her and give what advice you can to end the conversation on a positive note.

E) You suggest she talk to her manager. Later, you look into how many people have reached out for help and whether there is a systemic problem.

You're on a committee to plan team-building activities for the upcoming retreat. Which job would you prefer?



A) Researching the types of facilities that could host the event and determining which problem-solving challenges are the best fit

B) Creating a survey that would gather the preferences of all participants to ensure the event is inclusive and safe

C) Writing the business case for the event

D) Mapping out the rules and communicating the objectives and guidelines to the team

E) Acting as facilitator on the day of the retreat to motivate the group and make sure everyone is feeling good

Which careers sound most appealing to you?



A) Training specialist, online user experience designer, or project manager

B) Healthcare practitioner, sales representative, or police detective

C) Sports coach, technical writer, or tour guide

D) Mental health counselor, public defender, or talent manager

E) Public relations specialist, statistician, or museum curator



Now imagine you're 16 again. Which part-time job would you choose?



A) Camp counselor

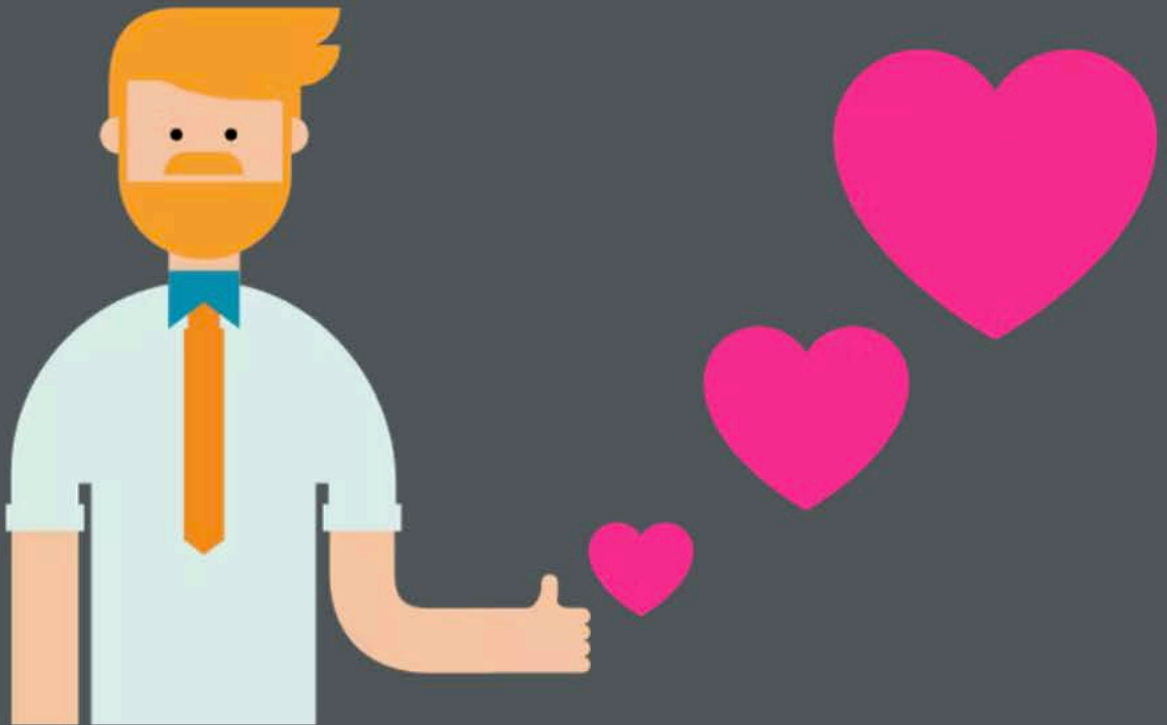
B) Retail sales associate

C) Tutor

D) Restaurant server

E) Office assistant

Some people are afraid of this, but I love it!



A) New software and technology

B) Delayed gratification

C) Public speaking

D) Meeting new people

E) Moving or starting a new job

