



What's your educator personality?

You're an educator. Seeing your students succeed is objective number one. But there's more than one way to achieve that. Some lead with empathy, others with innovation. Some are more analytical, while others are more collaborative. So, which are you?

Take a brief quiz to find out your educator personality type.

[Start the quiz](#)

Which tech tool tops your shopping list?



A mobile device so I can video chat. I need that face-to-face interaction, even if it's virtual.

Slack, Google Drive... It's less about the tool and more about how well it helps me work together with people.

Whatever new thing is getting good hype. I like to be an early adopter.

A smart watch, because charts just motivate me!



What's your favorite kind of vacation?



Cultural

Road trip

Adventure

Group tour



It's time to buy a new car! What's your approach?



I'm pretty much just talking to everyone I know about their cars. I trust my friends' experiences and opinions more than anything else.

Whichever maker is innovating to boost performance and driving experience, that's where I'm shopping.

I've got a spreadsheet at the ready and the latest research and consumer reviews in every browser tab.

The first thing I think of is the comfort and safety of my passengers, whether that means airbags and warm seats up front or media screens and lots of room in the back.



What's the best way to ace a group project?



It's all about the rubric. However we divide the work, the final product should check off everything in the "Exemplary" column.

Our project should really stand out, so I'll put in more effort to present it in a cool, new way.

I want to do at least one part individually — my favorite is wrapping up with a personal reflection assignment.

I like to figure out the unique group dynamic and either collaborate or divide-and-conquer based on everyone's strengths.

What's your go-to conversation filler?



"I'd love to see any new photos of the kids!" (Or pets, of course.)

"You catch the game last night?"

"So, how 'bout this weather!?"

"Any plans for the weekend?"



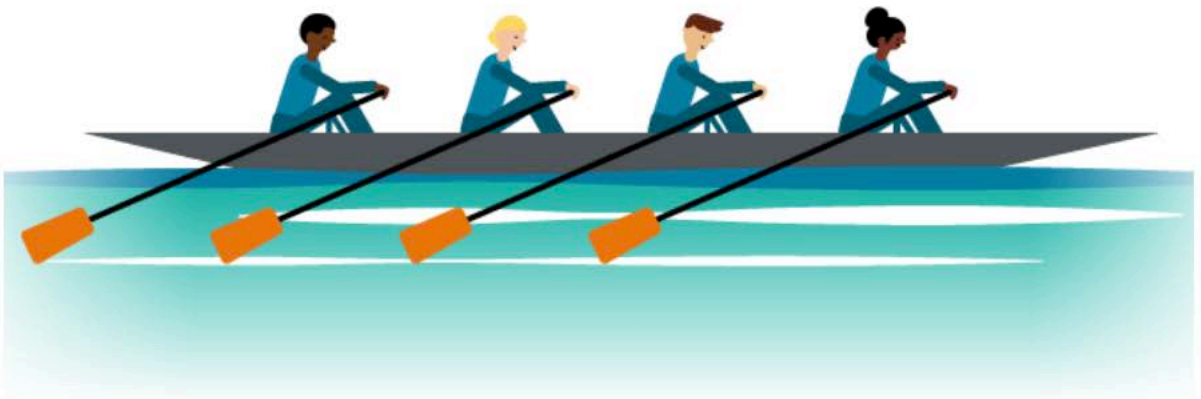


Your educator personality is... the team player

Much like the three musketeers, you're *all for one and one for all*. Maybe that comes from growing up playing team sports. Or maybe you were a theater kid or just really into that human knot game. Whatever your origin story, you learned along the way that working directly with others and communicating well would teach you more than you could learn on your own.

As an educator, you've brought this idea not only into your classroom, but into your institution as a whole. These days, your colleagues are your team — your squad. Collaborating with them and learning from their successes and struggles motivates you personally. Knowing how many great people you have working together to help your students win is the biggest victory of all.

Did we get you right? [Take the quiz again](#), or share the link with a friend to see how they measure up.





Your educator personality is... the (virtual) hugger

You and your peers know that being particularly formal and serious are traits to show during job interviews (or meetings with the Queen). 9 times out of 10, if everyone's comfortable with it, you're going in for the hug (or during COVID-19 times the elbow bump). After all, human connection and vulnerability aren't weaknesses — they're your superpower!

Perhaps it was repeat viewings of *Dead Poets Society* that drew you towards a career in education; or maybe you were more the *Dangerous Minds* type. Whatever inspired you, the draw was always to be someone who reaches students through compassion and who is sensitive to how complex their lives are. Because you care so much about who they are outside your course, no one is better equipped than you to connect to students inside your course.

Did we get you right? [Take the quiz again](#), or share the link with a friend to see how they measure up.



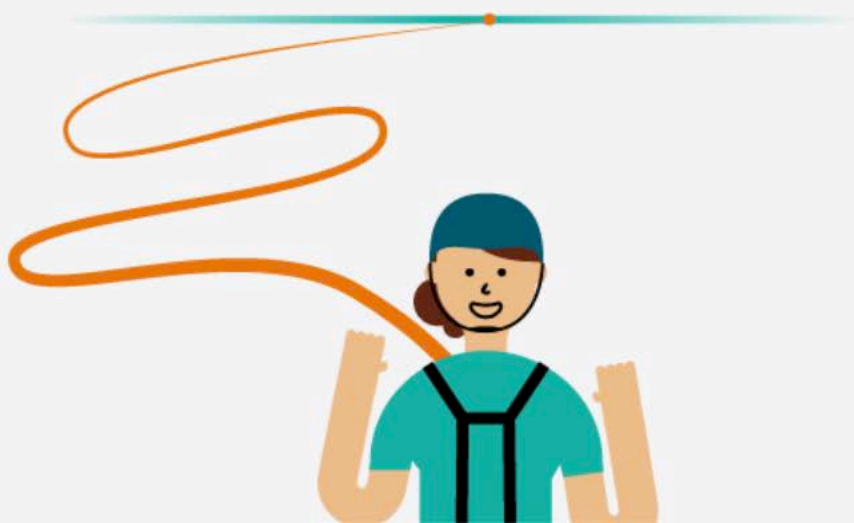


Your educator personality is... the thrill-seeker

You and your peers are the risk-takers — the weekend warriors. Trying new things is what recharges you because change and challenge are all a part of the fun. Why not add some cayenne to those brownies? Be the first to take that bungee jump! You don't mind leading the way. Even if you encounter setbacks, you know that's just a part of the path to success.

As an educator, you're passionate about helping students and are always ready to go, no matter what new tools you're working with or what new strategies you have to pioneer. Your objective is always to improve student learning, and if that means putting in a little extra time up front to learn new things, so be it! You don't mind getting a little uncomfortable in the interest of innovation.

Did we get you right? [Take the quiz again](#), or share the link with a friend to see how they measure up.





Your educator personality is... the data geek

Facts and figures are your bread and butter! If you're a sports fan, you live by player stats. If you're a runner, your wearable tracker is practically a body part. No friend has ever asked a spreadsheet question you can't answer. And you know that it's not just about the data, it's about *using* that data to make informed decisions, from how many steps you take today to what blender you buy tomorrow.

As an educator, you place a high value on digital tools to give you deeper insights. Any time spent researching and adapting to the latest edtech advancements is a small price to pay for being able to make educated decisions based on the data and analytics they provide. Every chart dips and spikes, but you're confident that a focus on learning science will help keep your students on that upward trajectory — and you probably have a graph to prove it!

Did we get you right? **Take the quiz again**, or share the link with a friend to see how they measure up.

